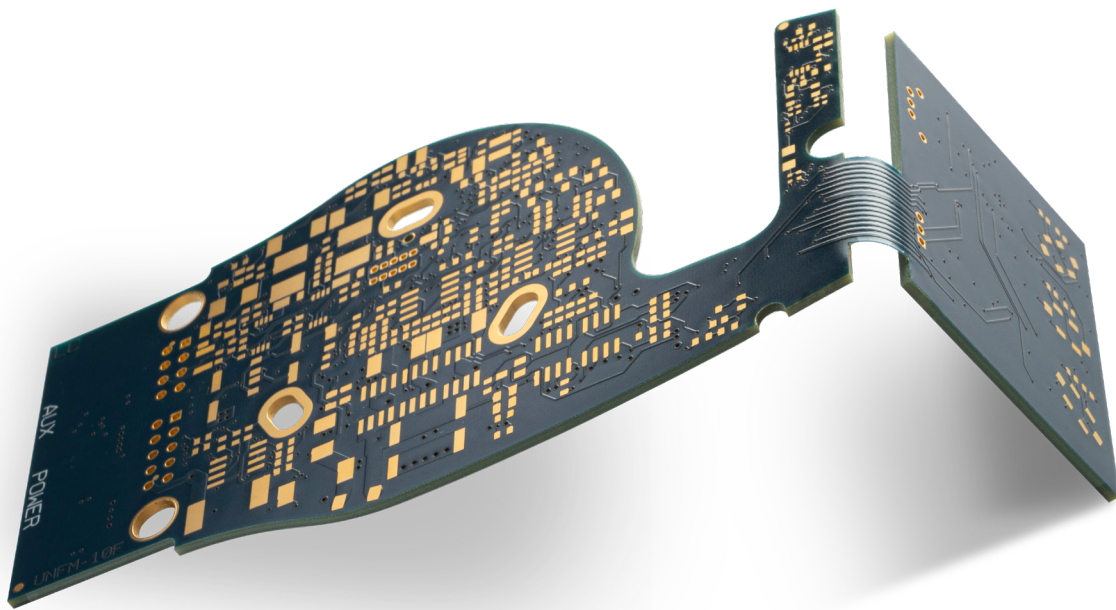


ALBA SEMIFLEX

Static, flexible and reliable interconnection



OVERVIEW

Alba SEMIFLEX technology is ideal for direct, static, yet flexible interconnection of two or more printed circuits (1 to 12 layers). Moreover, it does not need wires, clamps, connectors, or polyimide (PI)

ADVANTAGES



AFFORDABLE



STANDARD
SMT ASSEMBLY
PROCESS



MINIATURISABLE



EASY TESTING
AND INSPECTION



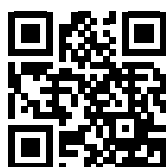
SIGNAL
INTEGRITY



COSTUMISABLE



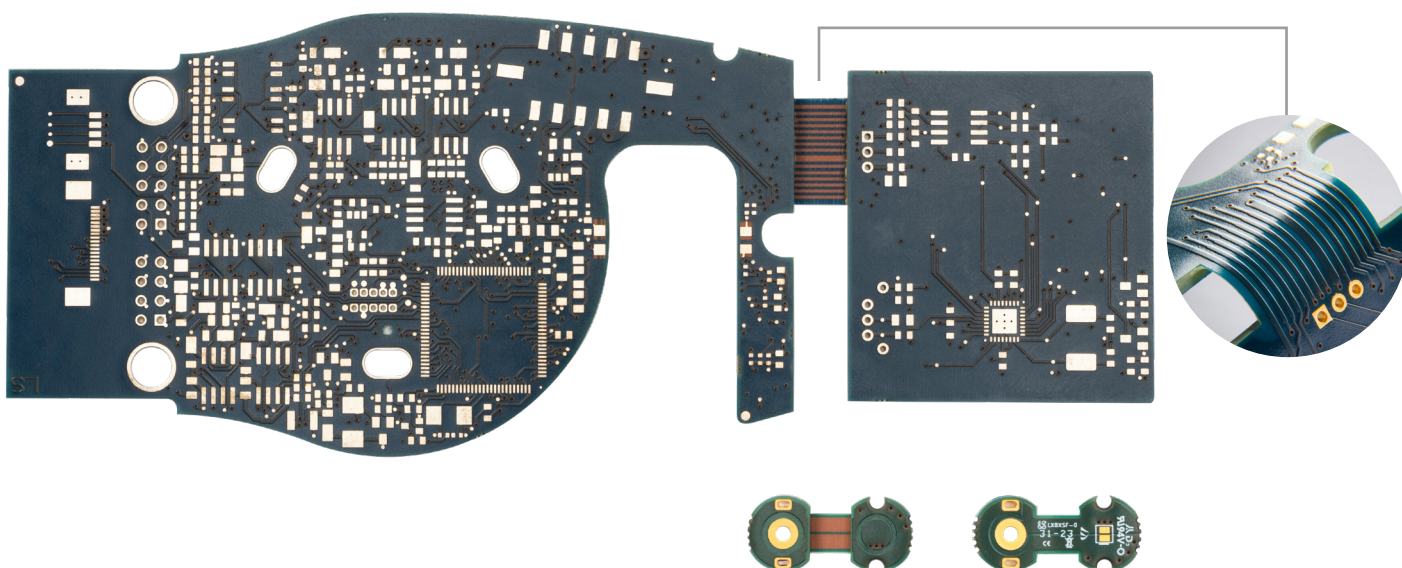
←
[for more info](#)



←
albacpcb.com

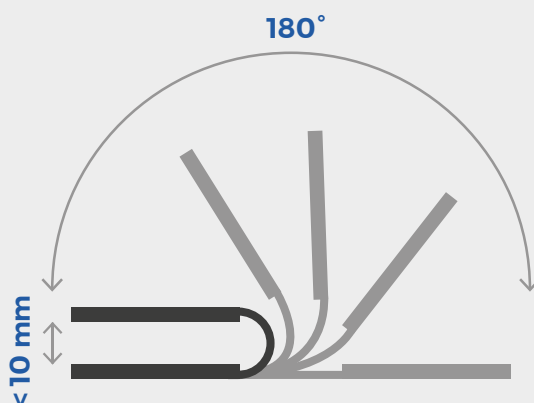
ALBA SEMIFLEX

Static, flexible and reliable interconnection



TECHNICAL DATA

TYPE:	6L
BASE MATERIAL:	FR4 CTI175
THICKNESS:	1,6mm
FLEX THICKNESS:	FR4 - 0,1mm
BASE COPPER:	35/35um
SOLDER-INK:	FLEX
MIN HOLES:	0,15mm



← for more info



← albacpcb.com